

General Population Poll in Albania Methodological Report 2013

I. The General Population Poll in Albania was conducted for the World Justice Project Rule of Law Index with sampling, fieldwork and data processing by MRP-EURASIA based in Moldova. **General Description:**

1. What were the exact dates of fieldwork?	08/02/2013 – 09/16/2013
2. What was the mode of interviewing?	Face-to-Face interviews
3. What was the achieved sample size?	1000 respondents
4. In what languages were the interviews conducted? If more than one language was used, how many interviews were conducted in each language?	MRP-EURASIA interviewed 1000 respondents in Albanian language.
5. What was the average length of each interview?	35 minutes

II. **Survey Design:**

6. What was the target population/sample universe for the survey?	National representative sample <ul style="list-style-type: none"> • The sample was stratified by income level or socioeconomic status, divided proportionally based on each level's share of the country's population. • A gender quota of 50:50 (Male: Female) was applied. 						
7. After city, what was the primary sampling unit for the survey?	Zone (urban sector).						
8. What sub-populations or stratum were used?	- Target age population for the Poll: 18 – 65+ y.o - Socio-demographic categories were specified also by urban regions (three largest cities by population) gender (50% -m, 50% - f), economic status (5 intervals), education level, ethnicity, and religion						
9. Please describe, in detail, the stratifications or quotas that were applied during fieldwork. What variables were involved? (e.g. city, gender, age, socio-economic status, etc.) What questions/criteria were used to classify a respondent for each relevant stratum? What information source was used to set quotas or targets? (e.g. census data, population statistics, etc.) Please provide a link or attachment if possible.							
1. gend. Sex of interviewee	<table style="width: 100%; border: none;"> <tr> <td style="padding-left: 20px;">Male</td> <td style="text-align: right;">500</td> </tr> <tr> <td style="padding-left: 20px;">Female</td> <td style="text-align: right;">500</td> </tr> </table>	Male	500	Female	500		
Male	500						
Female	500						
2. age. What is your age as of today?	<table style="width: 100%; border: none;"> <tr> <td style="padding-left: 20px;">18 - 25</td> <td style="text-align: right;">118</td> </tr> <tr> <td style="padding-left: 20px;">26 - 35</td> <td style="text-align: right;">180</td> </tr> <tr> <td style="padding-left: 20px;">36 - 45</td> <td style="text-align: right;">215</td> </tr> </table>	18 - 25	118	26 - 35	180	36 - 45	215
18 - 25	118						
26 - 35	180						
36 - 45	215						

46 - 55	201
56 - 65	153
65 +	133

3. **relig.** What is your religious preference? Are you...

Sunni Muslims	555
Bektashi Muslims	45
Catholic Christians	106
Orthodox Christians	228
Protestants	15
atheists	15
Believers without naming	15
other	5
no answers	16

4. **etni.** What is your racial-ethnic background? Are you...

Albanians	732
Balkan Egyptians	57
Greeks	54
Romani	49
AAbanians	42
Macedonians	46
Montenegrins	5
other	10
no answers	5

5. **nation.** What is your current nationality? Are you...

National [Citizen]	1000
Foreigner	0

6. **city.** City where the respondent lives) [This information may be filled directly by the interviewer]

1-st city: Tirana	704
2-nd city: Durrës	147
3—rd city: Shkodra	149

7. **income.** Would you please tell me the bracket that best represents your household's total income from all sources? This should include wages and salaries, net income from businesses, pensions, dividends, remittances, rents, and any other money income received by all members of the household. [Use the part of the card that you know best: Weekly, monthly, or annual income]

J - Low household income 0 – 204 USD	234
R - Below the average household income 205 - 449 USD	267
C - Average household income 450 - 739 USD	290
M - Above the average household income 740 - 1379 USD	166
F-Highest household income 1380+ + ... USD	43
Prefer not to answer	0
DK	0
DNA	0

8. **edu.** What is the highest degree you received?

None	2
Elementary school diploma	85
Middle school diploma	378
High school diploma or equivalent	292
Bachelor's degree	199
Graduate degree (Masters, Ph.D.)	32
DK	2
DNA	10

9. **occup.** What is your current employment situation?

Independent professional (doctor, lawyer, architect, etc.)	91
Business owner	141
Salaried employee	274
Self-employed informal	102
Temporarily out of work	122
Retired / pensioner	133
Doesn't work / responsible for shopping and housework	11
Student	87
DK/DNA	39

In order to set the quotas, MRP-EURASIA has used public and internal information. The public sources of information were the following sources: <http://www.instat.gov.al/al/home.aspx> , <http://www.instat.gov.al/en/figures/statistical-databases.aspx> , http://en.goldenmap.com/Demographics_of_Albania , http://en.wikipedia.org/wiki/Demographics_of_Albania#Number_of_households .

Our internal information referred to the age – household income distribution at national level, mapping the three biggest cities in Albania. This information we have got from multiple national surveys we have conducted for our internal purposes over the last years. This approach offered us the opportunity to obtain primary data agreed by local experts in social and demographic spheres and by the public servants. We have combined all about mentioned sources and have got the stratifications or quotas that were applied during fieldwork.

10. Please describe, in detail, how the sample was drawn. Were any external population statistics, census data, or other sources of information used to draw the sample? If yes, please provide a link to the source or an attachment if possible.

The sample was drawn based on the above described approach, along with other data we have collected from other surveys conducted for our clients at local level. Thus, the sample was drawn based on standard population distributions that we know to have an impact on data accuracy.

11. What three cities were included in the fieldwork? In what region, province, and district is each of the three cities located?

1st city: Tirana is the capital and the largest city of Albania.

Tirana became Albania's capital city in 1920 and has a population of 600,000, with metro area population of 763,634. The city is host to public institutions and private universities, and is the centre of the political, economic, and cultural life of the country.

2nd city: Durrës is the second largest city of Albania located on the central Albanian coast, about 33 km (21 mi) west of the capital Tirana. It is one of the most ancient and economically significant cities of Albania.

Durrës is situated at one of the narrower points of the Adriatic Sea, opposite the Italian ports of Bari (300 km or

186 mi away) and Brindisi (200 km or 124 mi away). Durrës is home to Albania's main port, the Port of Durrës, and to the newest public university, the Aleksandër Moisiu University. It has a population of 115,550, while the metropolitan area has a population of 265,330.

3rd city: Shkodra is a city in northwestern Albania in the District of Shkodër, of which it is the capital. It is one of the oldest and most historic places in Albania, as well as an important cultural and economic centre. During many different epochs it has retained its status as a major city in the Western Balkans, due to its geostrategic positioning close to the Adriatic and the Italian ports, but also with land-routes to other important cities and towns in neighbouring regions.

Its importance is heightened by the Lake of Shkodër to the west of the city—the largest in the Western Balkans—that straddles Albania and neighbouring Montenegro. The population of Shkodër is 95,907, while Shkodër County has a population of 217,375

12. Please describe, in detail, how neighborhoods/settlements were selected in each city.

Respondents were selected randomly from all the 10 zones in **Tirana**, in this way each zone is represented in the final distribution. Regarding the other two cities, **Durrës** and **Shkodra**, we used respective three and two zones structure. The number of population in each zone is almost the same for each above mentioned city.

13. Please list the neighborhoods/settlements selected for the survey.

ZONE.

Tiranë - 1

Bam	101
Mujos	102
Pazari	103
Korsi	104
Laprakë	105
Kombinat	106
Xhamlliku	107
Allias	108
Tirana e Re	109
Ali Demi	110

Durrës - 2

Shih Port-side	201
Anën veriore	202
Pjesa Lindore	203

Shkodra - 3

Side Perëndimor	301
Anën jugore	302

14. Were any neighborhoods/settlements substituted due to interviewer safety, inaccessibility, or other logistical reasons? If yes, please list these neighborhoods/settlements and the reason, in detail, for the substitution.

Were did not observe such kind of problems

15. Describe, in detail, how households were selected in each neighborhood/settlement.

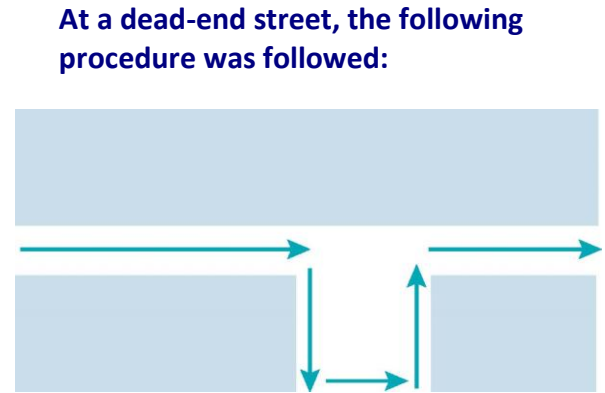
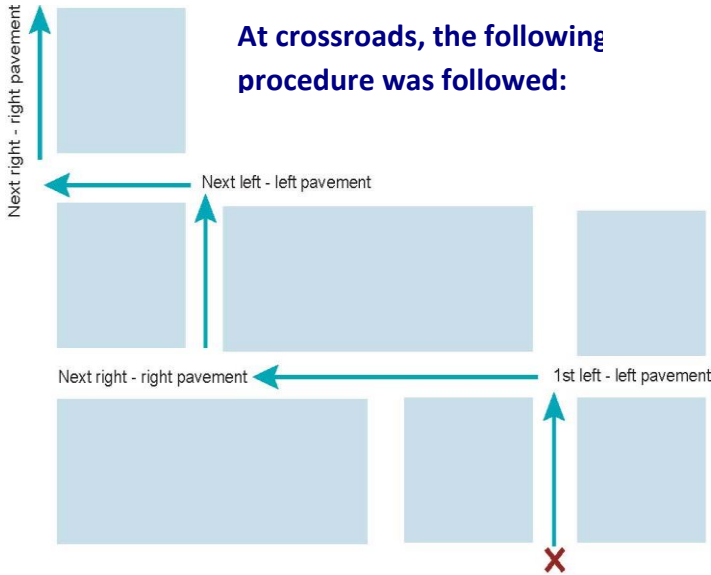
Random Walk (route) Procedure for this study

Interviewers had to follow strict instructions for identifying potential respondent-households: Office buildings, uninhabited/abandoned housing units, schools, hospitals, public buildings, factories, workshops, supermarkets and shops were excluded from the count. He/She rang the doorbell of every fifth housing unit (i.e.

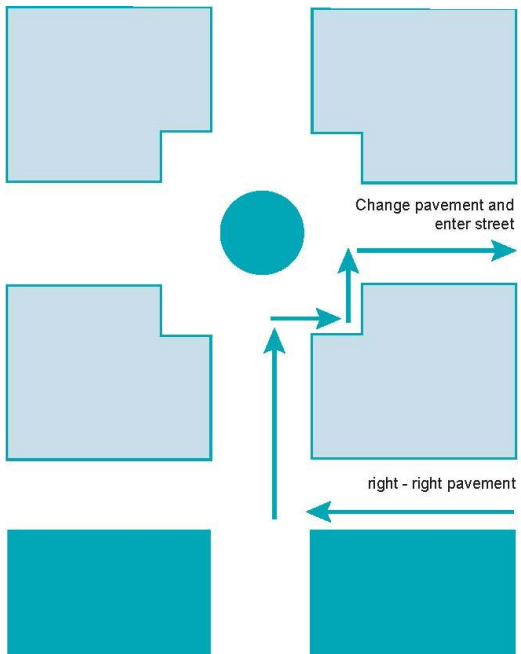
houses or apartments).

1.	2.	3.	4.	5.	6.	7.	8.	9.	10.	11.	12.	13.	14.	15.	16.
Start															
1 st contact					2 nd contact					3 rd contact					4 th contact

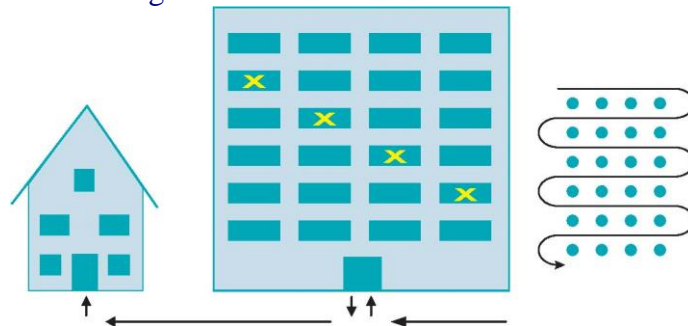
Facing the street, the interviewer went to the left. When turned at the end of the street, the interviewer did not stop counting housing units. If there was no other street (e.g. a park) at the end of the street, then the interviewer returned to the corner of the street where he/she changed direction and turns left if he/she previously turned right or vice versa.



At a square or roundabout, the following procedure was followed:



In the case of multiple housing units (e.g. apartments), the following procedure had to follow: the interviewer considered every apartment as a separate housing unit and started at the top of the building, working his/her way down. If there was no easy access to the building, the interviewer counted the doorbells starting at the top left end and ending at the bottom right. When leaving the apartment building, the interviewer continued with the first housing unit encountered next to the building.



III. Respondent Selection

16. How were individual respondents selected within each household?

Random respondent selection
 Respondents were selected based on the 'last birthday' method. With the help of the contact person, the interviewer selected the household member whose birthday comes next. According to the methodology only one interview per 1 household had to be hold.

17. Describe the procedure for respondent substitution. How many substitutions took place during the survey?

The substitution of the selected respondent was allowed only after three failed attempts (calls) to reach him/her. Our interviewers made 185 substitutions.

18. Describe the procedure for callbacks. How many attempts were made to reach a selected respondent? In aggregate, what were the contact rates for each attempt?

We applied the same approach for callbacks as for respondent substitution, he have described in question nr. 17.

Total attempts to reach respondent - 1202 . Unsuccessful / interrupted interviews – 202. Successfully implemented interviews - 1000

Nr	City	No appropriate respondent in a household	Refusal to be interviewed	Interrupted interview	Successfully completed interview	Total	IR %
1	Tirana	89	34	10	704	837	81,11%
2	Durrës	25	9	3	147	184	74,83%
3	Shkodra	20	8	4	149	181	78,52%
	TOTAL	134	51	17	1000	1202	79,80%

IV. Supervision and Quality Control

19. How many interviewers worked on the project? Divided into how many teams? How many male and how many female interviewers?

The MRP-EURASIA interviewers are 25-35 years old, who graduated from university. 85% of them are specialists in sociology, economics, marketing and management and 60% of them are women.

Nr	City	Supervisors	Interviewers	Women	Men	Total	% Women	% Men
1	Tirana	1	17	10	7	18	55,56%	44,44%
2	Durrës	1	3	3	1	4	75,00%	25,00%
3	Shkodra	1	3	2	2	4	50,00%	50,00%
	TOTAL	3	23	15	10	26	57,69%	42,31%

20. Please describe how interviewers were trained for the project.

MRP EURASIA always is oriented to offer qualitative products and services. One of the component, which ensures this is professional development of the field staff. We do it applying various methods, including distance learning elements (webinars), because our branches are located in many countries. The central office

prepares all necessary materials regarding methodology, guides, manuals and the schedule of the training sessions. We develop separate sets of materials for each project, taking into consideration its specifics and customer requirements.

We conducted two basic trainings for this project, one for supervisors and processing team and one for interviewers. These trainings were focused on F2F PAPI polling methodology, quality control, effective communication techniques and the structure and content of the questionnaire, as well as the meaning of each question. Other training components were ensuring qualitative data entry, quota distribution and sampling. In addition to maintain the proper project implementation our local office conducted weekly status meetings (briefings), which included analysis of realized activities, errors and difficulties identification and ways of their Fixing.

21. What was the process for back-checking interviews? How many interviews were conducted under direct supervision? How many interviews were checked through in-person or telephone back-checks by the supervisory team? How many back-checks were performed by the central office?

The main purpose of control was to identify non-genuine (deceptive), and low quality completed questionnaires, failure interviewers requirements on selection appropriate respondent.

Supervision work of interviewers was conducted in accordance with international standards of marketing and sociological research ICC / ESOMAR Code and the AMA ("Notes on how to apply the ICC / ESOMAR International Code of Marketing and Social Research Practice" (June, 2001).

Control of interviewers included the following components:

- Logical / visual
- Telephone
- Address

Verification work was implemented immediately upon receipt of the first completed questionnaires (concurrently with baseline survey). The questionnaires for checking were selected randomly.. The head and local offices involved respectively five and three employees for the local field team controlling. Below we are presenting controlling components:

- Visual control questionnaires for completeness and logic filling - 100%
- Visual control of route sheets to comply with the route, steps and logic filling - 100%
- Control field by supervisors (personal presence at interview) - 16%
- Control conducted interviews by back telephone calls respondents - 14%
- Control conducted interviews by a return visit to the household - 8%
- Control data entry by local office (database) - 100%
- Control data entry by Head office (database) - 30%

22. Were any questionnaires rejected for quality-control reasons? If so, how many?

7 questionnaires were rejected due to: incomplete answers (3 questionnaires), error in logic of filling inter-connected questions (3), spoiled due bad weather conditions (1). All rejected questionnaires were replaced by other questionnaires. We added seven additional interviews for this purpose.

23. Please describe the data entry process. How was the process supervised? How many questionnaires were selected for double-entry?

Data entry has been implemented immediately upon receipt the first completed questionnaires (during the baseline survey).

3 people were engaged in the data entry process.

2 people (including one IT specialist) visually checked the correctness of data entering (after entering each 5 questionnaires)

- Control data entry by local office (database) - 100%
- Control data entry by Head office (database) - 30%

24. What was the contact rate for the survey? What was the cooperation rate? What was the net response rate?

Nr	City	No appropriate respondent in a household	Refusal to be interviewed	Interrupted interview	Successfully completed interview	Total	IR %
1	Tirana	89	34	10	704	837	81,11%
2	Durrës	25	9	3	147	184	74,83%
3	Shkodra	20	8	4	149	181	78,52%
	TOTAL	134	51	17	1000	1202	79,80%

V. Other

25. Please include any other comments you have on the design, implementation, and data processing for the survey.

There are no other comments.



<http://www.mrp-eurasia.com>
[email: rfp@mrp-eurasia.com](mailto:rfp@mrp-eurasia.com)
http://www.mrp-eurasia.com/Market_Research_Reports



**At crossroads, the following
procedure was followed:**